



# CalWORKs Division

## December 2005 Newsletter

Published by the CalWORKs Division



### UPDATE TO THE DPSS HOUSING PROGRAM POLICY

The following changes are effective November 21, 2005.

Policy has been revised to the Temporary Homeless Assistance (THAP+14) and Rental Subsidy Assistance (RA) Programs by changing the eligibility to these two programs to *only* CalWORKs Welfare-to-Work (WtW) participants. This change is necessitated due to the scarcity in Performance Incentive – Net County Cost (PI-NCC) funds. Previously the THAP+14 and RA programs were available to non-WtW participants. In addition, the frequency in which CalWORKs applicants/participants may receive THAP+14 benefits has also changed to follow the State's Temporary Homeless Assistance requirement of once-in-a-lifetime.

**Note:** Issuances for THAP+14 may be issued beyond the effective date as necessary, as long as the application was taken prior to November 21, 2005. Likewise, RA payments authorized prior to November 21, 2005 will continue to be issued for the four consecutive authorized months.



### QUALITY CHILD CARE FOR DPSS EMPLOYEES

#### Attention DPSS Employees!

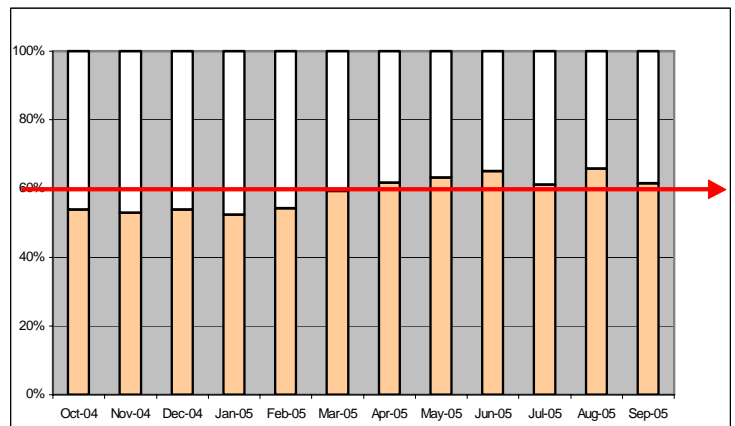
If you are a parent of a four year old child, you may be eligible for full-time child care for only \$172.00 a month at the DPSS Expo Park Child Care Center. You may contact the Expo Park Child Care Center directly at (323) 766-6100, for additional information.

In addition, we have three more child care centers that offer reasonable rates in the cities of El Monte and City of Industry. For more information on any of the DPSS Child Care Centers please contact: Nadia Varela at (562) 508-6875 or via e-mail at [nvarela@ladpss.org](mailto:nvarela@ladpss.org).



### DEPARTMENTAL GOAL FOR SPECIALIZED SUPPORTIVE SERVICES

Congratulations! Through your hard work, we met our Departmental Goal of increasing the percentage of participants who commenced specialized supportive services to 60% during Fiscal Year (FY) 04/05. In October 2004, 54% of participants who were referred, accessed services. By September 2005, we had exceeded the goal with 62% of participants commencing services.



We are now faced with the challenge of increasing the percentage of participants who access specialized supportive services to 70% in FY 05/06. Please continue to motivate your participants to ensure they show up to their scheduled appointments. With your continued efforts, we know we can meet this new goal.



### DID YOU KNOW!!!

On November 1, 2005, the CalWORKs district offices formed "**District Access Teams**" comprised of Eligibility Workers who were assigned on an "on call" basis to facilitate access to benefits and services for homeless families. This approach allows access centers and shelters to contact the designated staff, and arrange for families to go to the district office to have applications and/or homeless benefits expedited. If needed, the teams will travel to shelters and access centers in order to ensure that homeless families are serviced.

## Seasons Greetings

